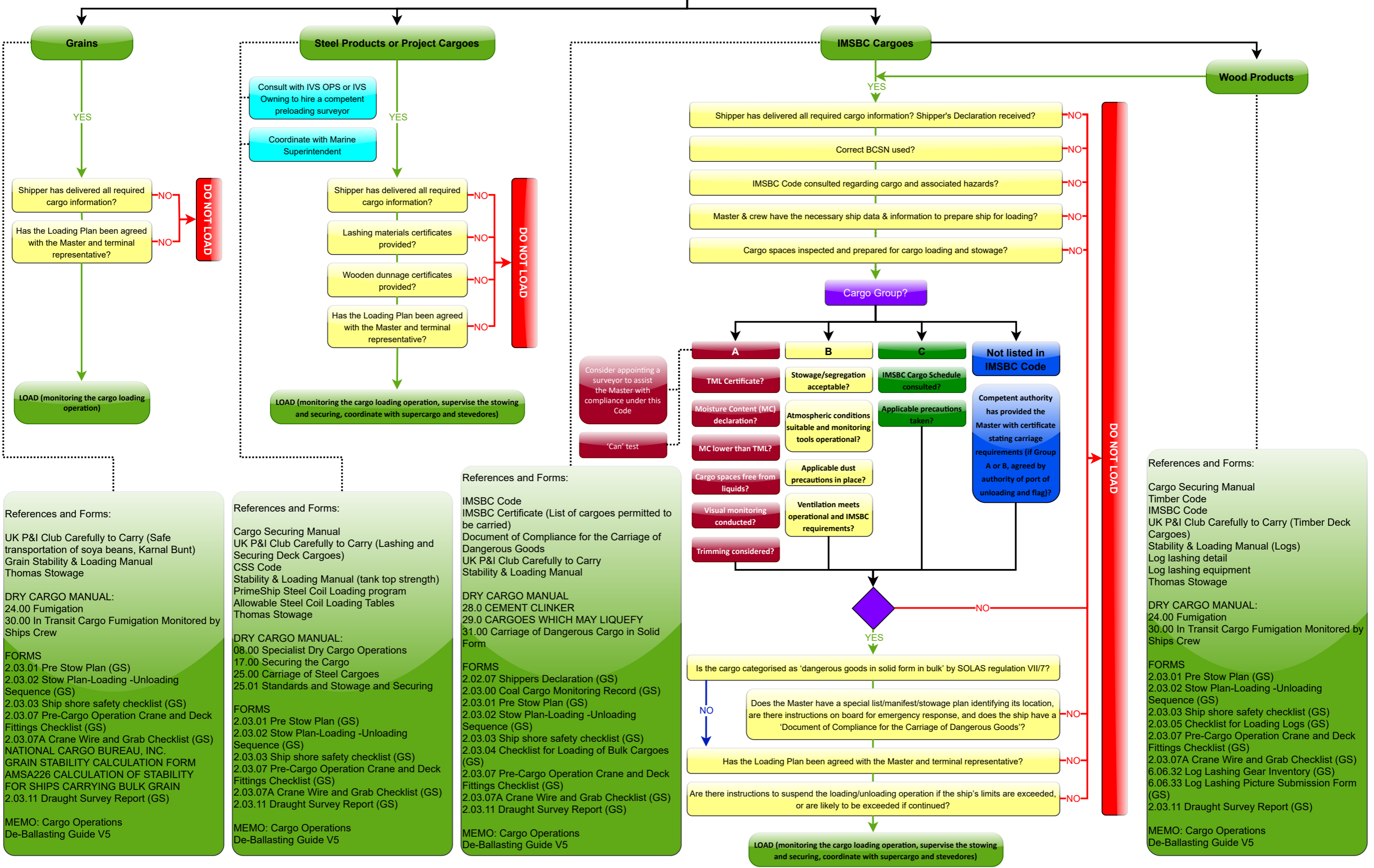




Cargo to load



References and Forms:

- UK P&I Club Carefully to Carry (Safe transportation of soya beans, Karnal Bunt)
- Grain Stability & Loading Manual
- Thomas Stowage

DRY CARGO MANUAL:

- 24.00 Fumigation
- 30.00 In Transit Cargo Fumigation Monitored by Ships Crew

FORMS

- 2.03.01 Pre Stow Plan (GS)
- 2.03.02 Stow Plan-Loading -Unloading Sequence (GS)
- 2.03.03 Ship shore safety checklist (GS)
- 2.03.07 Pre-Cargo Operation Crane and Deck Fittings Checklist (GS)
- 2.03.07A Crane Wire and Grab Checklist (GS)
- NATIONAL CARGO BUREAU, INC.
- GRAIN STABILITY CALCULATION FORM
- AMSA226 CALCULATION OF STABILITY FOR SHIPS CARRYING BULK GRAIN
- 2.03.11 Draught Survey Report (GS)

MEMO: Cargo Operations De-Ballasting Guide V5

References and Forms:

- Cargo Securing Manual
- UK P&I Club Carefully to Carry (Lashing and Securing Deck Cargoes)
- CSS Code
- Stability & Loading Manual (tank top strength)
- PrimeShip Steel Coil Loading program
- Allowable Steel Coil Loading Tables
- Thomas Stowage

DRY CARGO MANUAL:

- 08.00 Specialist Dry Cargo Operations
- 17.00 Securing the Cargo
- 25.00 Carriage of Steel Cargoes
- 25.01 Standards and Stowage and Securing

FORMS

- 2.03.01 Pre Stow Plan (GS)
- 2.03.02 Stow Plan-Loading -Unloading Sequence (GS)
- 2.03.03 Ship shore safety checklist (GS)
- 2.03.07 Pre-Cargo Operation Crane and Deck Fittings Checklist (GS)
- 2.03.07A Crane Wire and Grab Checklist (GS)
- 2.03.11 Draught Survey Report (GS)

MEMO: Cargo Operations De-Ballasting Guide V5

References and Forms:

- IMSBC Code
- IMSBC Certificate (List of cargoes permitted to be carried)
- Document of Compliance for the Carriage of Dangerous Goods
- UK P&I Club Carefully to Carry
- Stability & Loading Manual

DRY CARGO MANUAL

- 28.0 CEMENT CLINKER
- 29.0 CARGOES WHICH MAY LIQUEFY
- 31.00 Carriage of Dangerous Cargo in Solid Form

FORMS

- 2.02.07 Shippers Declaration (GS)
- 2.03.00 Coal Cargo Monitoring Record (GS)
- 2.03.01 Pre Stow Plan (GS)
- 2.03.02 Stow Plan-Loading -Unloading Sequence (GS)
- 2.03.03 Ship shore safety checklist (GS)
- 2.03.04 Checklist for Loading of Bulk Cargoes (GS)
- 2.03.07 Pre-Cargo Operation Crane and Deck Fittings Checklist (GS)
- 2.03.07A Crane Wire and Grab Checklist (GS)
- 2.03.11 Draught Survey Report (GS)

MEMO: Cargo Operations De-Ballasting Guide V5

References and Forms:

- Cargo Securing Manual
- Timber Code
- IMSBC Code
- UK P&I Club Carefully to Carry (Timber Deck Cargoes)
- Stability & Loading Manual (Logs)
- Log lashing detail
- Log lashing equipment
- Thomas Stowage

DRY CARGO MANUAL:

- 24.00 Fumigation
- 30.00 In Transit Cargo Fumigation Monitored by Ships Crew

FORMS

- 2.03.01 Pre Stow Plan (GS)
- 2.03.02 Stow Plan-Loading -Unloading Sequence (GS)
- 2.03.03 Ship shore safety checklist (GS)
- 2.03.05 Checklist for Loading Logs (GS)
- 2.03.07 Pre-Cargo Operation Crane and Deck Fittings Checklist (GS)
- 2.03.07A Crane Wire and Grab Checklist (GS)
- 6.06.32 Log Lashing Gear Inventory (GS)
- 6.06.33 Log Lashing Picture Submission Form (GS)
- 2.03.11 Draught Survey Report (GS)

MEMO: Cargo Operations De-Ballasting Guide V5